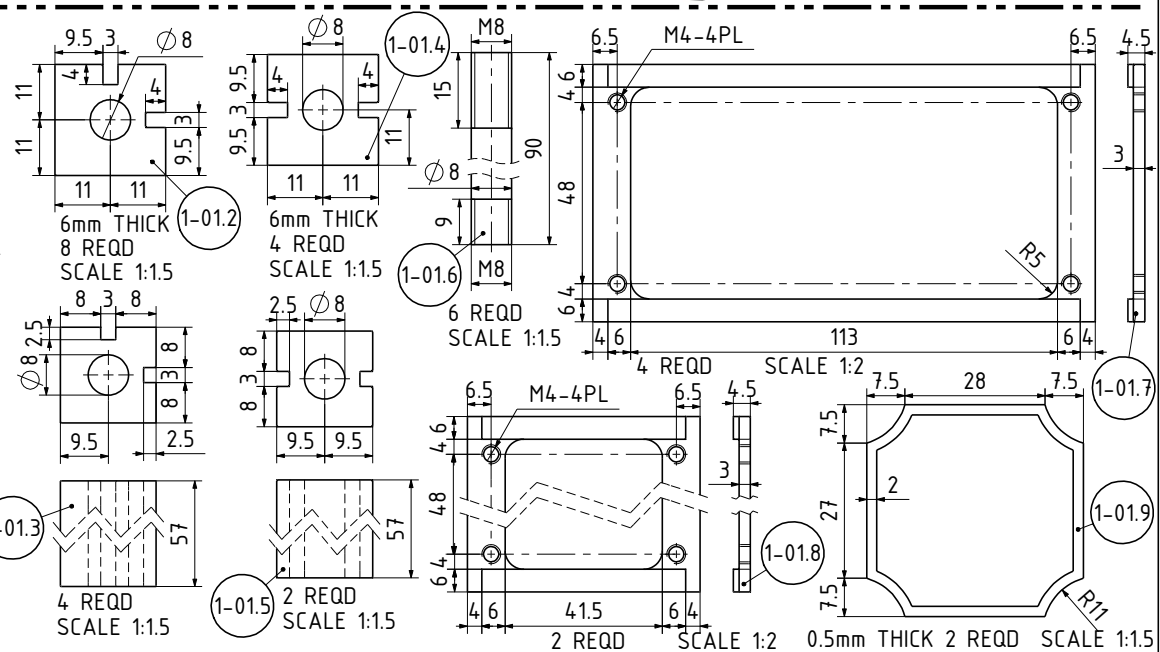
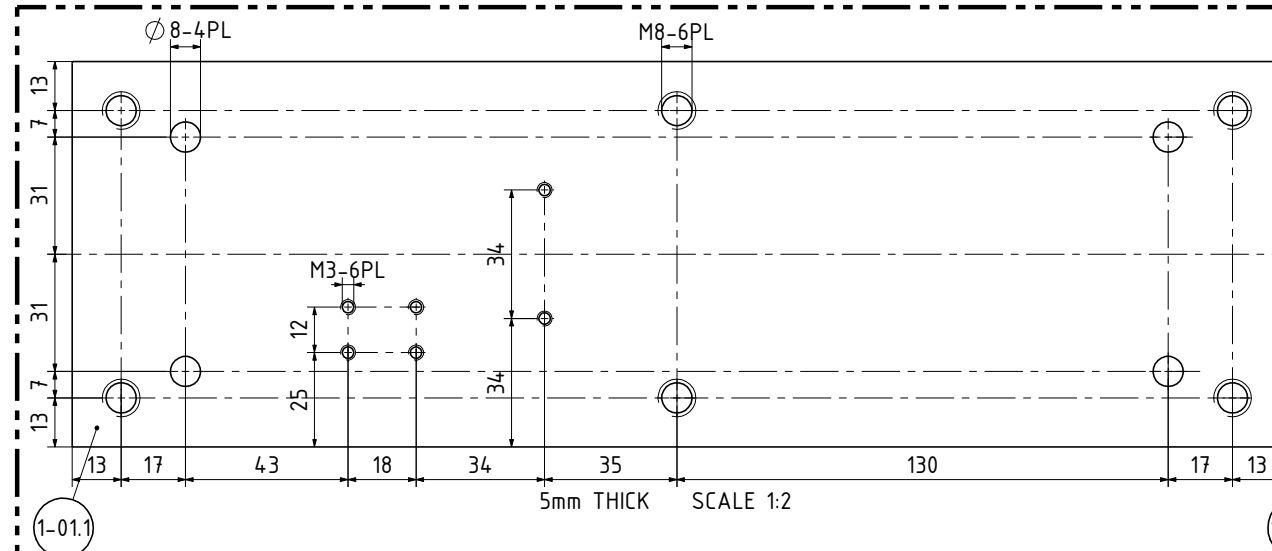
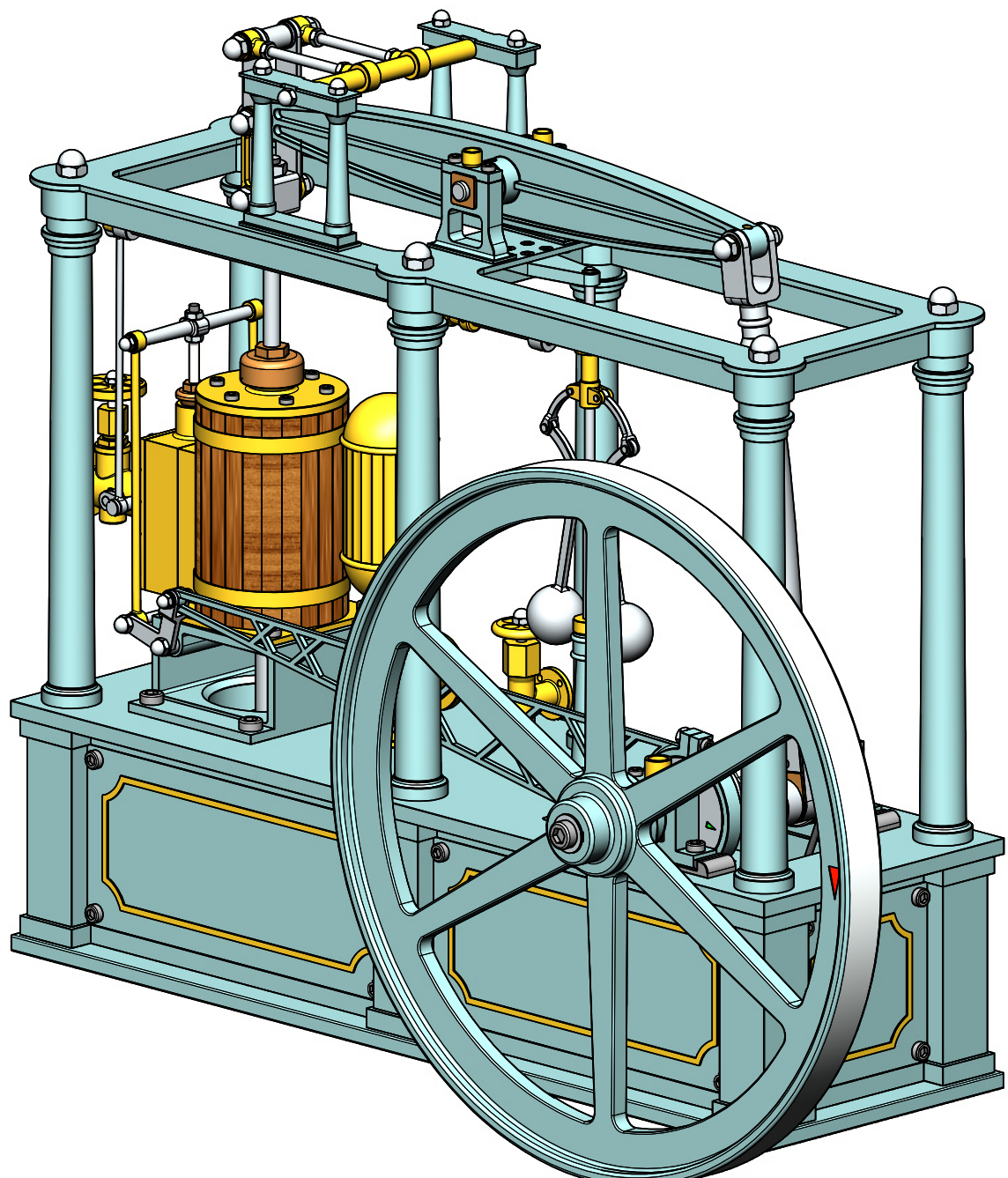
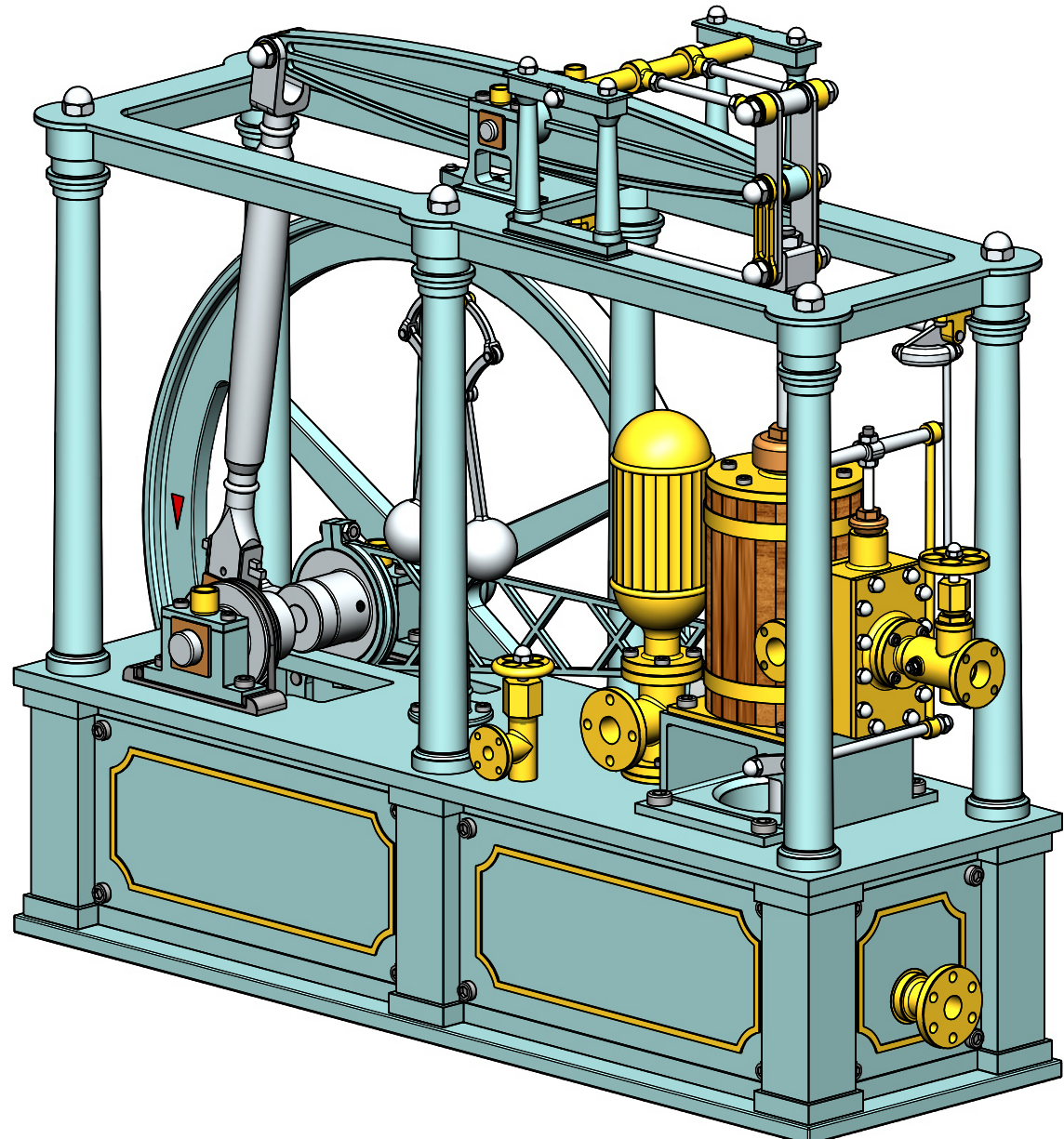


QTY.	PART NUMBER
1	09E-54-00-1-01-BASE PLATE+ENGINE PLATFORM
6	09E-54-00-1-02-PILLAR
1	09E-54-00-1-03-BEAM BEARING PLATFORM
2	09E-54-00-1-04-CRANKSHAFT BEARING
1	09E-54-00-1-05-CYLINDER-PUMP MOUNTING FRAME
1	09E-54-00-1-06-CYLINDER
1	09E-54-00-1-07-WATER PUMP BODY
1	09E-54-00-1-08-WATER PUMP AIR VESSEL
1	09E-54-00-1-09-WATER BY-PASS VALVE
1	09E-54-00-1-10-STEAM INLET VALVE
1	09E-54-00-1-11-GOVERNOR BASE BODY
1	09E-54-00-1-12-GOVERNOR DRIVE BELT BRACKET
1	09E-54-00-1-13-GOVERNOR DRIVE BELT IDLER BRACKET
1	09E-54-00-1-14-PARALLEL LINK BEARING
2	09E-54-00-1-15-BEAM BEARING
1	09E-54-00-2-01-CRANKSHAFT+FLYWHEEL
1	09E-54-00-2-02-ECCENTRIC
1	09E-54-00-2-03-BALANCED BEAM
1	09E-54-00-2-04-CON-ROD
2	09E-54-00-2-05-PARALLEL ROD
1	09E-54-00-2-06-PARALLEL LINK
1	09E-54-00-2-07-PISTON+CROSSHEAD
2	09E-54-00-2-08-CROSSHEAD LINK
1	09E-54-00-2-09-SLIDE VALVE
1	09E-54-00-2-10-ECCENTRIC STRAP
1	09E-54-00-2-11-VALVE ROCKER SHAFT
2	09E-54-00-2-12-VALVE LINK ROD
1	09E-54-00-2-13-GOVERNOR DRIVING SHAFT
2	09E-54-00-2-14-GOVERNOR DRIVING IDLER SHEAVE
1	09E-54-00-2-15-DRIVING BELT
1	09E-54-00-2-16-GOVERNOR DRIVEN SHAFT
2	09E-54-00-2-17-GOVERNOR FLY WEIGHT
1	09E-54-00-2-18-GOVERNOR MOVING COLLAR
2	09E-54-00-2-19-GOVERNOR COLLAR LINK
1	09E-54-00-2-20-GOVERNOR CONTROL SHAFT
1	09E-54-00-2-21-STEAM CONTROL FLAP
1	09E-54-00-2-22-CONTROL LINK ROD
1	09E-54-00-2-23-LINK ELBOW
2	09E-54-00-M1.5x3 A-K GRUB SCREW
1	09E-54-00-M1.5x4 A-K CYL HEAD SCREW
1	09E-54-00-M2 NUT
1	09E-54-00-M2 WASHER-BRASS
19	09E-54-00-M2.5 DOME NUT
6	09E-54-00-M2.5 WASHER-BRASS
3	09E-54-00-M2.5x4 A-K GRUB SCREW
4	09E-54-00-M2.5x6 A-K C-SINK SCREW
4	09E-54-00-M2.5x6 A-K CYL HEAD SCREW
4	09E-54-00-M2.5x8 A-K CYL HEAD SCREW
2	09E-54-00-M2x6 A-K CYL HEAD SCREW
11	09E-54-00-M3 DOME NUT
8	09E-54-00-M3 NUT
12	09E-54-00-M3x10 A-K CYL HEAD SCREW
2	09E-54-00-M3x5 A-K GRUB SCREW
8	09E-54-00-M3x6 A-K C-SINK SCREW
20	09E-54-00-M3x6 A-K CYL HEAD SCREW
12	09E-54-00-M3x8 A-K CYL HEAD SCREW
8	09E-54-00-M4 DOME NUT
8	09E-54-00-M4 WASHER-BRASS
4	09E-54-00-M4x10 A-K CYL HEAD SCREW
24	09E-54-00-M4x4 A-K CYL HEAD SCREW
2	09E-54-00-M4x6 A-K C-SINK SCREW
4	09E-54-00-M4x6 A-K CYL HEAD SCREW
6	09E-54-00-M4x8 A-K CYL HEAD SCREW
6	09E-54-00-M5 DOME NUT
2	09E-54-00-M5 NUT
4	09E-54-00-M5x10 A-K CYL HEAD SCREW
1	09E-54-00-M6 NUT-SPECIAL
1	09E-54-00-M6 WASHER
1	09E-54-00-M6x10 A-K CYL HEAD SCREW
1	09E-54-00-M8 NUT-SPECIAL



ADDITIONAL NOTES ABOUT THESE DRAWINGS:  
 1) NO MATERIALS HAVE BEEN SPECIFIED ON THESE DRAWINGS. THE BUILDER TO CHOOSE ITS OWN PREFERRED MATERIAL FOR THE PARTS/COMPONENTS. THE FOLLOWING COLOURS ON THE DRAWINGS INDICATES POSSIBLE MATERIALS WHICH CAN BE USED FOR PARTS: THE COLOURED COMPONENTS COULD BE ALUMINIUM OR MILD STEEL, YELLOW=BRASS, LIGHT GREY=ALUMINIUM OR MILD STEEL, REDDISH BROWN=COPPER, DARK BROWN=BRONZE OR GUN METAL, WHITISH=SILVER STEEL OR STAINLESS STEEL

NOTES: FOUND A SINGLE DRAWING OF THIS ENGINE AND SOME PICTURES ON THE INTERNET. SOME PICTURES WERE PUBLISHED ON THE "MODELENGINEERINGWEBSITE" WEBSITE

TITLE  
**1 CYLINDER NON REVERSING BALANCED BEAM PUMPING ENGINE NAMED "LADY STEPHANIE"**

DRAWING CONTENTS  
**ISOMETRIC VIEW, PARTS AND ASSEMBLIES, NOTES, B.O.M.**

PROJECT No 09E-54-00  
 JDW DRAUGHTING SERVICES  
 J.A.M. DE WAAL, 12 BRIGHTWELL STREET PAPAOKURA  
 2110, NEW ZEALAND. PHONE: 0064 09 2988815. MOB: 0211791000 E-MAIL: dewaal@xtra.co.nz.

PROJECTION **JDWDS** MODEL SCALE: 1:1  
 DWG SCALE: 1:1 @A3 OR AS SHOWN  
 DATE JULY 2021 Copyright © J.A.M. DE WAAL PAPAOKURA NZ  
 SHEET: 02 OF 07 **A3** No: 09E-54-00-SHT02

**DRAWINGS ARE FOR PERSONAL USE ONLY NOT FOR COMMERCIAL PURPOSES**